

# COMMON LIZARDS OF PAPUA NEW GUINEA

## PALAI LONG PAPUA NEW GUINEA —EDUCATION TODAY FOR TOMORROW— KWIK GUIDE #1 V. 2.2

**Do not kill wildlife.** We need to work hard to preserve the amazing wildlife of PNG for future generations. Think about preserving forests and wildlife for your children's children.

**Noken kilim animal long bus.** Yu mi mas wok hat long lukatuim kain kain animal long PNG. Tinting long lukatuim kain kain animal long bihain taim belong pikinini bilong pikinini bilong yu.

**Uda dekenai idia noho mauri gaudia aladia lasi.** Ita be namo ita gaukara goada inai mauri gaudia PNG lalonai naridia namo namo gabei mai natudia totona. Emui uda bona mauri gaudia naridia namo namo oi emu natuna ena natuna totona.

Do you know how many species of lizards are found in PNG? The answer is surprising. More than 250 lizard species live in PNG. Which lizards are found in your village?

Yu save long hamas kain kain palai istap long PNG? No ken kirap no gut long answer. Yu mi gat 250 kain kain palai stap insait long PNG. Wanem kain kain palai istap insait long liklik ples bilong yu?

Oi diba aria toadia idau idau hida PNG lalonai idia noho? Ena ahere be do oi hoa diba. PNG lalonai idia noho aria idau idau ena numera be 250. Edana aria be oi emu hanua dekenai idia noho?



**PREHENSILE-TAIL SKINK**  
(PRASINOHARMA PREHENSICAUDA)  
FAMILY SCINCIDAE



**RED-TAIL SKINK**  
(LIPINIA PULCHRA)  
FAMILY SCINCIDAE



**BICARINATE FOUR-TOED SKINK**  
(CARLIA BICARINATA)  
FAMILY SCINCIDAE



**MOURNFUL FOUR-TOED SKINK**  
(CARLIA LUCTUOSA)  
FAMILY SCINCIDAE



**SNAKE-EYED SKINK**  
(CRYPTOBLEPHARUS SP.)  
FAMILY SCINCIDAE



**MONKEY-TAILED SKINK**  
(CORUGIA ZEBRATA)  
FAMILY SCINCIDAE



**BLUE-TAIL SKINK**  
(EMOIA CAERULEOCAUDA)  
FAMILY SCINCIDAE



**PACIFIC BLUE-TAILED SKINK**  
(EMOIA CYANURA)  
FAMILY SCINCIDAE



**'BLUE-BELLIED' SKINK**  
(EMOIA CYANOGASTER)  
FAMILY SCINCIDAE



**JAKAT SKINK**  
(EMOIA JAKATI)  
FAMILY SCINCIDAE



**KORDON TREE SKINK**  
(EMOIA KORDONA)  
FAMILY SCINCIDAE



**RED MASTIFF SKINK**  
(EUGONGYLUS RUFESCENS)  
FAMILY SCINCIDAE



**EMERALD TREE SKINK**  
(LAMPROLEPIS SMARAGDINA)  
FAMILY SCINCIDAE



**LITTER FOUR-TOED SKINK**  
(LYSISAURUS CURTUS)  
FAMILY SCINCIDAE



**GREEN SKINK**  
(PRASINOHARMA VIRENS)  
FAMILY SCINCIDAE



**ST. AIGNAN ISLAND SKINK**  
(SPHENOMORPHUS AIGNANUS)  
FAMILY SCINCIDAE



**CRANE'S SKINK**  
(SPHENOMORPHUS CRANEI)  
FAMILY SCINCIDAE



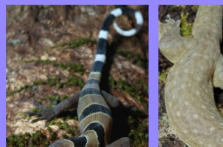
**FORBES SKINK**  
(SPHENOMORPHUS FORBESI)  
FAMILY SCINCIDAE



**FRAGILE SKINK**  
(SPHENOMORPHUS FRAGILIS)  
FAMILY SCINCIDAE



**JOBI ISLAND SKINK**  
(SPHENOMORPHUS JOBIENSIS)  
FAMILY SCINCIDAE



**LOUISIAD GECKO**  
(CYRTODACTYLUS LOUISIADENSIS)  
FAMILY GEKKONIDAE



**LAMP GECKO**  
(GEHYRA LAMPEI CF)  
FAMILY GEKKONIDAE



**MUTILATING GECKO**  
(GEHYRA MUTILATA)  
FAMILY GEKKONIDAE



**BLACK-LINED SKINK**  
(SPHENOMORPHUS NIGROLINEATUS)  
FAMILY SCINCIDAE



**SOLOMON GROUND SKINK**  
(SPHENOMORPHUS SOLOMONIS)  
FAMILY SCINCIDAE



**BLUE-TONGUE SKINK**  
(TILIGUA GIGAS)  
FAMILY SCINCIDAE



**PACIFIC CARINATED GECKO**  
(NACTUS MULTICARINATUS)  
FAMILY GEKKONIDAE



**BURTON'S SNAKE-LIZARD**  
(LIALIS BURTONIS)  
FAMILY GEKKONIDAE



**HOUSE GECKO**  
(HEMIDACTYLUS FRENATUS)  
FAMILY GEKKONIDAE



**RED-EYED CROCODILE SKINK**  
(TRIBOLGONOTUS BRAGILIS)  
FAMILY SCINCIDAE



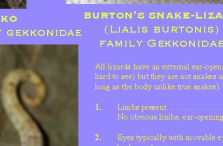
**BUTTRESS SKINK**  
(SPHENOMORPHUS BIMUS)  
FAMILY SCINCIDAE



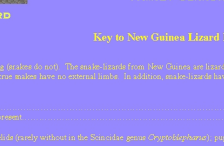
**PAPUAN ANGLE-HEAD LIZARD**  
(HYPSILURUS PAPUENSIS)  
FAMILY AGAMIDAE



**BANDED-TAIL GECKO**  
(GEKKO VITTATUS)  
FAMILY GEKKONIDAE



**MOURNING GECKO**  
(LEPIDODACTYLUS LUGUBRIS)  
FAMILY GEKKONIDAE



**STRIPED DRAGON**  
(LOPHOGNATHUS TEMPORALIS)  
FAMILY AGAMIDAE



**PAPUAN SPOTTED MONITOR LIZARD OR KUNBU PALAI**  
(VARANUS INDICUS)  
FAMILY VARANIDAE

### Key to New Guinea Lizard Families

1. Lacks pores  
(No obvious fimbriae, ear-opening present)
2. *Pygopodidae* (Snake-lizards)
3. Eyes typically with movable eyelids (easily withdrawn in the *Scincidae* genus *Phrynosoma*); pupil round; scales on the back overlapping  
Eyes without movable eyelids; eyes circulate with a narrow vertical slit; scales on the back small granular/reticulate and not overlapping; small body size (possible less than 250 mm); often only active at night
4. *Gekkonidae* (Geckos)
5. Scales on top of head (typically) covered with large regular plate-like scales that are immovable; scales often smooth and shiny  
Scales on top of head (typically) covered with large regular plate-like scales that are immovable; scales often smooth and shiny
6. *Scincidae* (Skinks)
7. Eyes with movable eyelids; pupil round; small granular/reticulate and not overlapping scales; tongue broad and flat (caudal lobes absent); hind (heteropod) ventromedial layer thin; forehead, snout, body size (typically ranging from 100-300 mm); often with a tail length less than 1 meter
8. *Agamidae* (Cricket lizards)
9. Eyes with movable eyelids; pupil round; small granular/reticulate and not overlapping scales; snake-like tongue; large body size (typically greater than 200 mm); often with a tail length of more than 100 mm
10. *Varanidae* (Crested lizards)

LOUISIANA STATE UNIVERSITY MUSEUM OF NATURAL SCIENCE (ALL RIGHTS RESERVED) CHRISTOPHER AUSTIN (CCAUSTIN@LSU.EDU) IN ASSOCIATION WITH: