

COMMON SNAKES OF PAPUA NEW GUINEA

SINEK LONG PAPUA NEW GUINEA

—EDUCATION TODAY FOR TOMORROW—

KWIK GUIDE #2 V. 2.3

Do not kill wildlife. We need to work hard to preserve the amazing wildlife of PNG for future generations. Think about preserving forests and wildlife for your children's children.

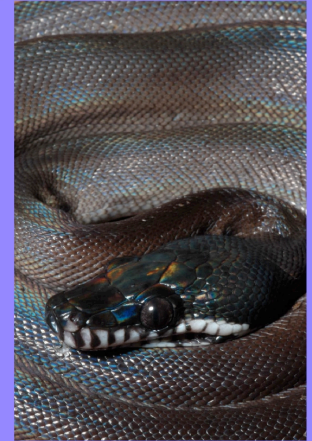
Noken killim animal long bus. Yu mi mas wok hat long lukatuim kain kain animal long PNG. Tinting long lukatuim kain kain animal long bihain taim belong pikinini bilong pikinini bilong yu.

Uda dekenai idb noho mauri gaudia aladia lasi. Ita be namo ita gaukara goada inai mauri gaudia PNG lalonai naridia namo namo gabei mai natudia totona. Emui uda bona mauri gaudia naridia namo namo oi emu natuna ena natuna totona.

In PNG there are more than 90 species of snakes. Do you know how many are venomous? The answer is that only 5 land snakes are dangerous to humans. See what species are found in your village.

Insait long PNG yu mi igat 90 kain kain sinek. Yu save hamas sinek long ground em gat poison? Answer long dispela em 5. Yu save wanem kain kain sinek istap long liklik hap bilong yu.

PNG lalonai noho gai gai iboudiai be 90. Oi diba gai gai toadia idau idau hida ese idia korimu neganai do oi mase? Ahere be inai, tanobada dekenai noho gai gai ima ese bema idia korimu neganai do oi mase diba. Oi itaia inai gai gai ima lalonai, edana gauna be oi emu hanua dekenai ia noho.



D'ALBERTIS OR WHITE-LIPPED PYTHON (LEIOPYTHON ALBERTISII) FAMILY PYTHONIDAE



DAVID WILLIAMS
PAPUAN BLACKSNAKE (PSEUDECHIS PAPUANUS) FAMILY ELAPIDAE (HIGHLY VENOMOUS: BIKPELA POISON)



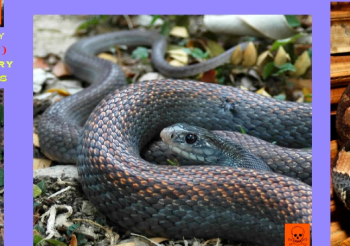
BROWN TREE SNAKE (BOIGA IRREGULARIS) FAMILY COLUBRIDAE



GREEN TREE PYTHON (MORELIA VIRIDIS) JUVENILE FAMILY PYTHONIDAE



DEATH ADDER (ACANTHOPIUS LARVIE) FAMILY ELAPIDAE (HIGHLY VENOMOUS: BIKPELA POISON) COMMONLY STEPPED ON CAUSING SERIOUS INJURY RED AND BEEY COLOR PHASE OF DEATH ADDERS



PAPUAN TAIPAN (OXYURANUS SCUTELLATIO) FAMILY ELAPIDAE (HIGHLY VENOMOUS: BIKPELA POISON)



PACIFIC BOA OR LAZI SNAKE (CANODIA CARINATA) FAMILY BOIDAE



CARPET PYTHON (MORELIA SPILOTA) FAMILY PYTHONIDAE



NEW GUINEA SMALL-EYED SNAKE OR IKAHEKA SNAKE (MICROPECHIS IKAHEKA) FAMILY ELAPIDAE (HIGHLY VENOMOUS: BIKPELA POISON)



BARRED KEELBACK (TROPIDONOPHIS DORIAE) FAMILY COLUBRIDAE



PAINTED KEELBACK (TROPIDONOPHIS PICTURATUS SP) FAMILY COLUBRIDAE



MANY-SCALED KEELBACK (TROPIDONOPHIS MULTISCUPELLATUS) JUVENILE FAMILY COLUBRIDAE



EASTERN OR COMMON BROWN SNAKE (PSEUDONAJA TEXTILIS) FAMILY ELAPIDAE (HIGHLY VENOMOUS: BIKPELA POISON)



MULLER'S CROWNED SNAKE (ASPIDOMORPHUS MUELLERI) FAMILY ELAPIDAE (VENOMOUS POTENTIALLY DANGEROUS)



PAPUAN TREESNAKE (DENDRELAPHIS SP.) FAMILY COLUBRIDAE



COMMON KEELBACK (TROPIDONOPHIS MAIRII) FAMILY COLUBRIDAE



SOLOMONS CORAL SNAKE (SALOMONELAPS PAR) FAMILY ELAPIDAE (VENOMOUS POTENTIALLY DANGEROUS)



BLATEY-GREY SNAKE (STEGONOTUS CUCULLATUS) FAMILY COLUBRIDAE

LOUISIANA STATE UNIVERSITY MUSEUM OF NATURAL SCIENCE (ALL RIGHTS RESERVED) CHRISTOPHER AUSTIN (CCAUSTIN@LSU.EDU) IN ASSOCIATION WITH: